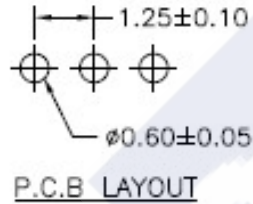
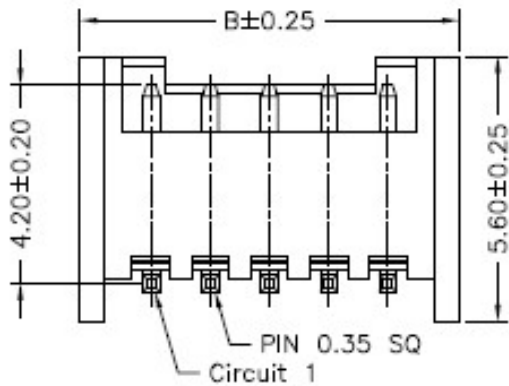
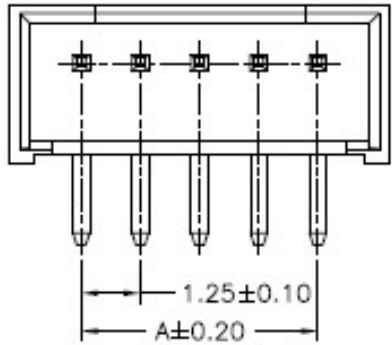
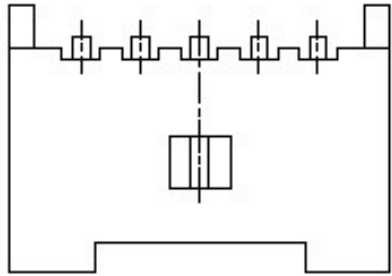


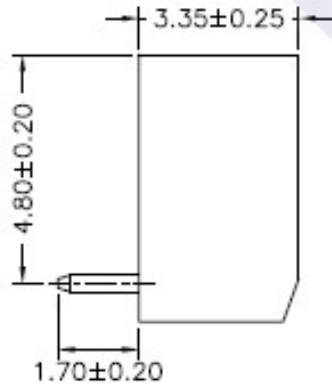
RoHS

Reach



Ordering Information & Dimension

Circuit No.	Dimensions	
	A	B
02	1.25	4.25
03	2.50	5.50
04	3.75	6.75
05	5.00	8.00
06	6.25	9.25
07	7.50	10.50
08	8.75	11.75
09	10.00	13.00
10	11.25	14.25
11	12.50	15.50
12	13.75	16.75
13	15.00	18.00
14	16.25	19.25
15	17.50	20.50



Explanation of PN.


1251J R XX - 3 HE 1

① ② ③ ④ ⑤ ⑥

- ① Series No.
- ② Connector Type : Right Angle
- ③ Circuits No.
- ④ Insulator Material : Nylon66, UL 94-V0
- ⑤ Color : Henna (472C)
- ⑥ Contact Plating : Bright Tin-plated,

Specification :

- Current Rating : 1A AC,DC
- Voltage Rating : 200V AC,DC
- Temperature Range : -25°C ~ +85°C
- Contact Resistance : 20mΩ Max.
- Insulation Resistance : 100mΩ Min.
- Withstanding Voltage : 500V AC/minute
- Pin Material : Brass
- Insulator Material : Nylon66, UL 94-V0
- Color : Henna (472C)

	DESCRIPTION : 1.25mm Pitch, Receptacle, Single Row, DIP, Right Angle	GENERAL TOLERANCE	
	PART NO. : 1251JRXX-3HEX	X.X ± 0.25 X.XX ± 0.15 X.XXX ± 0.05	SCALE : Free 